

# TOSHIBA

synchronise your business

## Value. Versatility. Functionality.

The perfect match for any document workflow.



**e-STUDIO™ 232/282**

# Would you like flexibility

If you're looking for productivity out of the box, with flexibility to grow, look no further. The Toshiba e-STUDIO232/282 multifunction devices offer small to medium sized workgroups the opportunity to streamline organisational resources so that diverse, networkable products work smoothly together. With their crisp black-and-white, 23- and 28-pages-per-minute output, these devices

feature the copy, print, scan, and faxing functionality that can accommodate even the busiest of office environments. In addition to their expansive nature, the e-STUDIO232/282 offer a host of impressive standard features including trayless duplexing, 2400x600 dpi resolution, two large 550-sheet cassettes, and an additional 100-sheet stack feed bypass to accommodate heavier stock papers and envelopes. Not bad for a value-priced multifunction device.



# or value? How about both?



The intuitive, simple-to-learn touch screen control panel features easy access to commonly used features. The screen tilts up to 45-degrees for increased usability.



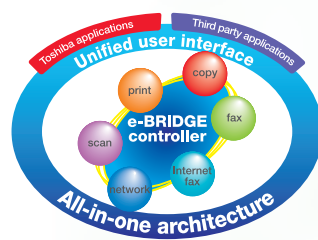
## Efficiency and room to grow

What really makes the e-STUDIO232/282 multifunction devices stand out from the crowd is the Toshiba Net-Ready architecture and its innovative 2nd generation e-BRIDGE hardware platform. The technology allows the devices to print and scan, print and fax, even copy and scan — all at the same time. This unified design shares system resources to control multiple functions and process information like none other.

## Greater security to reduce risk

- SMTP authentication
- LDAP authentication with Kerberos
- Active Directory with NTLM/Kerberos
- Role Based Access Control
- Private Print
- Optional Scrambler Board
- Optional Data Overwrite kit
- Wi-Fi authentication (WPA2) with Optional Wireless LAN antenna

Equipped with such diverse security measures, the e-STUDIO232/282 control access to confidential office information to help protect your valuable data.



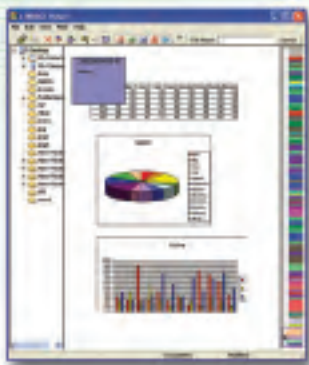
The e-STUDIO232/282 are the ideal solution for workgroups consisting of up to 20 users.



# Easily accommodates your and

## Flexibility, quality, and exceptional value.

The e-STUDIO232/282 are ready to take on just about any task. You can add functionality as the need arises — and you can do it easily, without altering the footprint. Both devices can be upgraded to a fully connected, network document processing system with the simple addition of a print-only enabler or a combined print-and-scan enabler. Either capability is activated via a small USB enabler key.



e-BRIDGE Viewer speeds up the search for documents stored in the users PC and MFD network folders.



Store all data in up to 200 e-filing boxes with thumbnail display.

### Productivity to spare

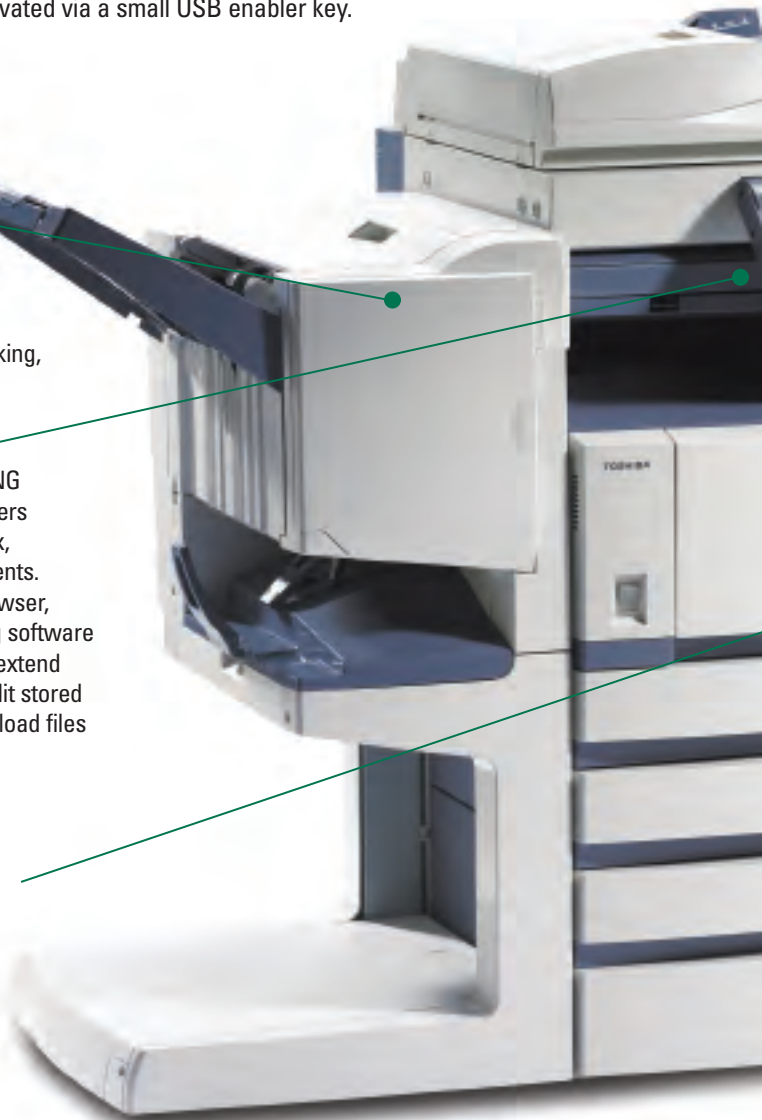
You get 100% duplex productivity vs. single-sided printing, thereby utilising the rated speed range of the product to its full extent. Plus, sophisticated document finishing capabilities include multi-position stapling, booklet-making, and hole punching.

### Innovative features

Toshiba's proprietary e-FILING feature makes it easy for users to access their e-FILING box, store and scan new documents. Using the e-FILING web browser, combined with downloading software and TWAIN driver, you can extend capabilities to merge and edit stored documents as well as download files to the desktop.

### Reliable by design

The e-STUDIO232/282 incorporate four service modules that make it simple to address the most frequently serviced components. Additionally, innovations such as a Scan Once/Copy Many feature reduce the wear and tear on the machine.



## Good for the planet

100% toner recycling technology means there is no waste toner to empty. This is not only less messy and more trouble-free, but reduces overall environmental impact.

# budget your future goals.



### Easy to use

Tilting, large touch-screen control panel offers intuitive user interface with one-touch function keys and less menu "drilldown".

### Maximum productivity

Proprietary templates offer fast and convenient access to frequently used settings. It can even execute various jobs simultaneously, not to mention allow up to 12,060 templates in total – that's 60 each for 200 individual users plus another 60 for public use.

### Versatile paper options

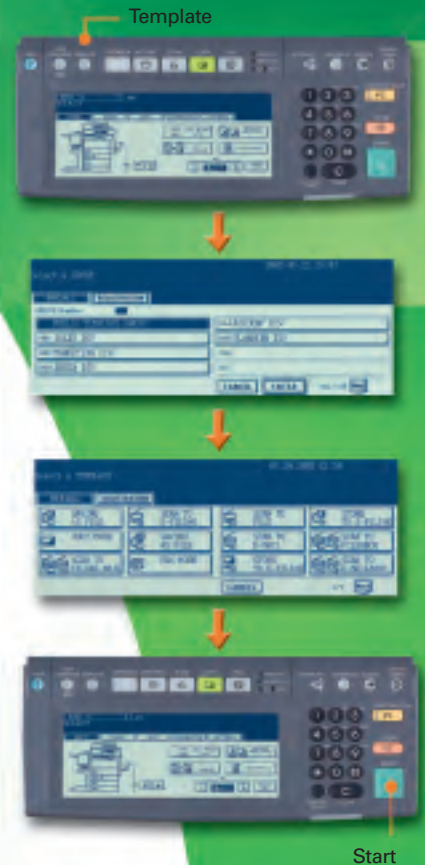
The 100-sheet-bypass tray is for specialty paper stock such as thick papers and transparencies.

### Large jobs are made easy

Two standard cassettes and a variety of paper configurations allow expansion up to an impressive 3,700-sheet total capacity.

### Just four steps to complete a job

Time-saving templates can be quickly created via the control panel, saving even complex jobs with pre-set elements.



## Innovative Software Solutions



### Take control of print and copy costs in your office

e-Bridge Device Manager allows accurate data collection and monitoring of your MFD usage statistics. In short, it's a software solution that puts you in the driver's seat with visual reports for effective management of your networked devices.



### Convert scanned documents into 16 file types with the touch of a button

Instant OCR file format transforms hardcopy text and graphic documents into easily editable file formats including .doc, .html, .pdf, and more. This innovative technology automatically performs optical character recognition and file conversions. Converted images can then be sent to network drives, Email, or both.

Plus, the e-STUDIO0232/282 are certified Energy Star compliant, lead-free, halogen-free, chromium-free, RoHS and WEEE compliant.



# More Features. More Technology. More Security.



With a small footprint and impressive capabilities, the cost-effective e-STUDIO232/282 unify four functions — standard copying, plus optional network printing, faxing, and scanning — for an effortless interchange of information through both intranet and Internet channels. And the features don't end there.



## Modular Architecture

The e-STUDIO232/282 can be customised to meet your needs by adding network printing, scanning, walk-up faxing, network faxing, and Internet faxing at any time. Activation couldn't be easier!

## TopAccess Remote Administration Enabled

The e-STUDIO232/282 devices employ a powerful web-based job and device management tool with two available web utilities — one designed for the end user, and one for the network administrator.



Left: TopAccess provides browser-based device management for users and administrators. Right: TopAccessDocMon alerts users to the completion of print jobs.

## Advanced Network Printing

Toshiba's e-BRIDGE architecture facilitates network printing with the addition of a USB key. Advanced print features include Private Print, Scheduled Print, Print to e-FILING, and Proof Print — the kind of functionality you won't find on stand-alone printers.

## Fast Scanning to Multiple Locations

Scan directly to either device's large 40 GB hard drive, scan-to-file, scan-to-Email, scan-to-e-FILING, and TWAIN compliant scanning integrate easily with different types of document workflow scanning requirements.

## Full-Function Faxing

Optional fax board supports walk-up and network fax capabilities so users can access the address book on the e-STUDIO232/282 or use the e-STUDIO address viewer to access additional private or public fax numbers.



## Heightened Security

Along with productivity and performance, today's businesses are becoming more and more concerned about security. That's why we've included features to make the e-STUDIO232/282 even more secure. The data overwrite feature writes over the data after each job is processed to protect confidential information. In addition, an optional scrambler board encrypts hard drive data to secure stored documents. Furthermore, complete LDAP authentication provides an additional layer of security by controlling access to the device.

To find out more, visit us online at [www.eid.toshiba.com.au](http://www.eid.toshiba.com.au), or call your local Authorised Toshiba Dealer.



# Build to order – flexible configuration

**options**

<b>Fax</b>	Fax Board Fax 2nd Line Board
<b>Wireless</b>	Wireless LAN Adapter Antenna
<b>Other</b>	Data Overwrite Kit PCI Slot Scrambler Board Parallel Interface Board Harness Kit for Coin/Card Controller Re-Rite™ OCR Package e-Bridge Device Manager

**examples:**

a.      b.      c.      d.

## copy features

- > Access Codes (1,000 Departments / 10,000 Users)
- > Annotation (Date / Time Print)
- > AMS / APS (RADF and Platen)
- > Auto Job Start
- > Auto Cassette Change
- > Auto Trayless Duplex
- > Auto Energy Saver
- > Auto Sleep Mode
- > Cover Sheet
- > Dual Page Copying
- > Edge Erase
- > e-FILING (Document Storage)
- > Electronic Sort

- > Energy Saver
- > Image Shift
- > Interrupt
- > Job Templates
- > Job Reservation (Scan Ahead)
- > Magazine Sort (Booklet-Making Mode)
- > Mirror Image
- > Negative / Positive
- > Page Numbering
- > Security
- > Sheet Insertion
- > Weekly Timer
- > X-Y Zoom
- > 2-in-1, 4-in-1, 8-in-1 Duplex

## print features

- > Cover Sheet
- > DocMon (Document Monitor Utility)
- > Duplex Printing
- > Hole Punch
- > Magazine Sort
- > Mixed-Size Printing
- > Private Print
- > Proof Print
- > Saddle-Stitch / Booklet Mode
- > Scheduled Print
- > Sheet Insertion
- > Stapled Sets
- > Store to e-FILING
- > Watermark

## scan features

- > Scan-to-File
- > Scan-to-e-FILING
- > Scan-to-Email
- > TWAIN Compatible

## device management features

- > Access Limitations
- > Automatic Supply Ordering
- > Department Code Enforcement
- > Email or Fax Notification for Counters and Preventative Maintenance
- > Email Notification for Service Calls
- > TopAccess Device Management Utility

## fax features

- > Address Book (1,000 Addresses)
- > Automatic Redial
- > Broadcasting (Max. 1,000 Destinations)
- > Chain Dialing
- > Delayed Transmission
- > Direct Transmission
- > Double-Sided Scanning and Reception
- > Dual Access
- > Group Dialing (Max. 200 Groups/ 400 Destinations/Group)
- > Optional Second Line
- > Network Faxing
- > Polling
- > Priority Transmission
- > Public Mailbox (F-Code)
- > Route Fax to Folder/Email/e-FILING
- > TX/RX Reporting

## GENERAL

<b>Type</b>	Desktop
<b>Printing/Copying process</b>	Indirect electrostatic photographic method
<b>Original scanning method</b>	CCD line sensor
<b>Paper input capacity (80g/m<sup>2</sup>, A4)</b>	Standard: 550 sheets x 2 (Drawer), 100 sheets (Bypass) Optional: 550 sheets x 1 (Paper Feed Pedestal), 550 sheets x 1 (Optional drawer for Paper Feed Pedestal) 2,500 sheets (Large Capacity Feeder)
<b>Paper size</b>	Standard: A3-A5R (Drawer), A3-A5R (Bypass), A3-A5R (Duplex)
<b>Paper weight</b>	Standard: 64-105g/m <sup>2</sup> (Drawer), 64-209g/m <sup>2</sup> (Bypass), 64-105g/m <sup>2</sup> (Duplex)
<b>Envelopes</b>	COM10, Monarch, DL, YOU-4, CHO-3
<b>ADU (Automatic Duplexing Unit)</b>	Standard
<b>Processor</b>	PowerPC/333MHz: Shared
<b>Memory</b>	Main Memory: 256MB: Shared/Page Memory: 32MB: Shared
<b>Hard disk drive</b>	40GB+: Shared
<b>Warm-up time</b>	Approx. 25 seconds
<b>Power consumption</b>	Max: 1.5kW (220-240V)
<b>Dimensions (W x D x H) &amp; weight</b>	637mm x 719mm x 739mm, Approx. 76.6kg

## COPYING FUNCTIONS

<b>Acceptable originals</b>	Sheet, book, three dimensional objects
<b>Original size</b>	A3-A5R
<b>Copy size</b>	A3-A5R
<b>Resolution</b>	Scanning: 600dpi x 600dpi Printing: 600dpi x 600dpi (with smoothing): 2,400dpi x 600dpi 256 steps
<b>Gradation</b>	23/28cpm (A4)
<b>Copying speed</b>	45/45spm (A4)
<b>Original scanning speed</b>	5.4 seconds
<b>First copy time</b>	Up to 999 copies
<b>Multiple copying</b>	Text, Text/Photo (Default), Photo, Custom mode
<b>Copy mode</b>	Zoom: 25-400% in 1% increments (Platen), 25-200% in 1% increments (RADF)
<b>Reproduction ratio</b>	Automatic/Manual (11 steps)
<b>Exposure control</b>	Automatic toner density method
<b>Copy density control</b>	
<b>Major features</b>	•Energy Saver •Trimming/Masking •Department Code (1,000 kinds) •Cover Sheet •Sheet Insertion •X-Y Zoom •Proof Copy •Magazine Sort •Alternation •2-in-1, 4-in-1, 8-in-1 •Annotation [Date/Time Print] •Job Reservation •Rotation Copy •Thick Paper mode

## PRINTING FUNCTIONS (Option)

<b>Print engine resolution</b>	2,400dpi x 600dpi (with smoothing)
<b>Printing speed</b>	23/28ppm (A4)
<b>Drivers</b>	Windows® 98/Me/2000/XP/Server2003 (32 bit), Windows® NT 4.0, Macintosh® 8.6, 9.x, X ver 10.1/10.2/10.3 (PPD), UNIX (HP-UX, Sun Solaris 2.6, 2.7, 7.8, 8, IBM AIX, SCO), Linux, CUPS 10/100BaseT, Full-speed USB, Optional IEEE802.11b/g (WiFi), Windows® Server2003 (32 bit), 2000, NT 4.0 including terminal edition 2000, Citrix® MetaFrame XP, NetWare® TCP/IP, IPX/SPX, EtherTalk, IPP, SNMP, HTTP PCL6®, PostScript® 3™
<b>Interface</b>	
<b>Network OS</b>	
<b>Protocols</b>	
<b>PDL</b>	
<b>Major features</b>	•Proof Print •Private Print •Scheduled Print •Duplex Printing •Watermark Printing •N-up Printing •Mixed-size Printing •Magazine Sort •Image Overlay •Front/Back Cover Insertion •Page Insertion •Save to Box (e-filing) •Department Codes Control •Email Printing

## SCAN FUNCTIONS (Option)

<b>Scanning speed</b>	50spm (A4, 400dpi)
<b>Scanning resolution</b>	600, 400, 300, 200, 150dpi
<b>File format</b>	TWAIN, TIFF/PDF (single and multi page)
<b>Protocols</b>	SMB, FTP, IPX/SPX
<b>Major features</b>	•2-sided Scan •Image Rotation •Mixed Size Paper scanning •Scan to Email •Scan to file (SMB, FTP) •Scan to e-filing

## ELECTRONIC FILING FUNCTIONS

<b>Number of boxes</b>	Public Box: 1, User Box: 200
<b>Number of folders</b>	100 folders per Box
<b>Number of documents</b>	400 documents per Box/Folder
<b>Number of pages</b>	1,000 pages per document
<b>Capacity of HDD</b>	5GB
<b>Input to box</b>	Copy to Box, Print to Box, Received Fax to Box, Received Internet-Fax to Box and Scan to Box (depending on installed options) TWAIN Driver, File Downloader
<b>Box N/W access applications</b>	

## INTERNET-FAX FUNCTIONS (Option)

<b>Connectivity supported</b>	T.37 (Simple Mode)
<b>Format of sent attachments</b>	TIFF-S
<b>Scanning original document size</b>	A3-A5R (A3 & B4: Image will be reduced to A4 size and transmitted.)
<b>TX resolution</b>	200dpi
<b>Major features</b>	•Off Ramp Gateway •Telephone Book (1,000 destinations)

## NETWORK FAX FUNCTION (Option)

<b>Compatibility</b>	Standard: Internet-Fax, Option: Super G3, G3
<b>Drivers</b>	Windows® 98/Me/2000/XP, Windows® NT 4.0
<b>Major Features</b>	•Incoming fax routing to file or email, Address Book, broadcasting

## NETWORK/DEVICE MANAGEMENT UTILITY

<b>•TopAccess™</b>	•TopAccessDocMon
<b>•Auto notification of events, total counter, PM, service call</b>	•e-Bridge Device Manager (optional)

## OPTIONS

<b>Printer Kit GM-1070</b>	
<b>Printer/Scanner Kit GM-2070</b>	
<b>Scanner Kit GM-4070</b>	
<b>Fax Board GD-1150</b>	
<b>Usable circuits</b>	Public Switched Telephone Network (PSTN)
<b>Communication mode</b>	Super G3, G3
<b>Number of lines</b>	1 line (2nd line optional)
<b>Modem speed</b>	Max. 33.6 kbps
<b>Data compression</b>	JBIG, MMR, MR, MH
<b>Transmission speed</b>	Approx. 3 seconds per page
<b>Memory capacity</b>	500MB (TX) 120MB (RX)
<b>Transmission resolution</b>	Direct/Memory transmission: 8 x 3.85 line/mm, 8 x 7.7 line/mm, 8 x 15.4 line/mm, 16 x 15.4 line/mm
<b>Reception resolution</b>	8 x 3.85 line/mm, 8 x 7.7 line/mm, 8 x 15.4 line/mm, 16 x 15.4 line/mm
<b>Print resolution</b>	24 x 23.1 line/mm, 23.1 x 24 line/mm
<b>Scanning mode</b>	Text, Photo/Text, Photo
<b>Grey scale</b>	256 levels (Error diffusion)
<b>Printing speed</b>	23/28ppm (A4)
<b>Major features</b>	•Telephone Book (1,000 destinations) •Broadcasting •Automatic Redialling •Group Dialling (200 groups, 400 destinations per group) •Chain Dialling •Delayed Transmission •Recovery Transmission •Polling •Mailbox (F-code) •Batch Transmission

## RADF (Reversing Automatic Document Feeder) MR-3020

<b>Original capacity</b>	100 sheets (A4, A3) (up to 1,000 pages in continue mode)
<b>Original setting</b>	Face-up
<b>Available original size &amp; weight</b>	A3-A5R, 35-157g/m <sup>2</sup> (single sided), 50-157g/m <sup>2</sup> (double sided)
<b>Dimensions (W x D x H) &amp; weight</b>	600mm x 523mm x 133mm, 12.5kg

## Large Capacity Feeder KD-1012

<b>Paper supply</b>	2,500-sheet
<b>Available paper size &amp; weight</b>	A4, 64-105g/m <sup>2</sup>
<b>Dimensions (W x D x H) &amp; weight</b>	530mm x 577mm x 307.5mm, 27kg

## Paper Feed Pedestal KD-1011

<b>Paper supply</b>	550-sheet cassette
<b>Available paper size &amp; weight</b>	A3-A5R, 64-105g/m <sup>2</sup>
<b>Dimensions (W x D x H) &amp; weight</b>	530mm x 577mm x 320mm, 21.5kg

## Drawer Module MY-1021

<b>Paper supply</b>	550-sheet cassette
<b>Available paper size &amp; weight</b>	A3-A5R, 64-105g/m <sup>2</sup>
<b>Dimensions (W x D x H) &amp; weight</b>	526mm x 569mm x 107mm, 3.8kg

## Desk MH-1700

## Finisher (Hanging type) MJ-1022

<b>Trays</b>	2
<b>Capacity &amp; paper weight</b>	Non-sort/Sort/Group: Top bin — 200 sheets (A5R-A4R), 140 sheets (B4), 100 sheets (A3), 80g/m <sup>2</sup> Bottom bin — 700 sheets (A5R-A4R), 490 sheets (B4), 350 sheets (A3), 80g/m <sup>2</sup> Staple sort: Top bin — 30 sets or 170 sheets (A4), 30 sets or 110 sheets (B4), 30 sets or 80 sheets (A3), 80g/m <sup>2</sup> Bottom bin — 50 sets or 600 sheets (A4), 50 sets or 400 sheets (B4), 50 sets or 300 sheets (A3), 80g/m <sup>2</sup> A3-A5R, 50-209g/m <sup>2</sup> 30 sheets (A4, 80g/m <sup>2</sup> )
<b>Paper size &amp; weight</b>	
<b>Staple capacity</b>	Single-position
<b>Staple position</b>	451mm x 539mm x 590mm, Approx. 17kg
<b>Dimensions (W x D x H) &amp; weight</b>	

## Finisher (Saddle-stitch type) MJ-1025

<b>Trays</b>	1
<b>Capacity &amp; paper weight</b>	Non-sort/Sort/Group: 1,000 sheets (A5R-A4), 600 sheets (A4R-A3), 80g/m <sup>2</sup> Staple sort: 30 sets, 160mm or 1,000 sheets (A4), 30sets, 97mm or 500 sheets (A4R-A3), 80g/m <sup>2</sup> A3-A5R, 64-209g/m <sup>2</sup> 50 sheets (A4, 80g/m <sup>2</sup> ) Multi-position (3 kinds), Saddle stitch Paper size: A3-A4R Staple capacity: 10 sheets (80g/m <sup>2</sup> )
<b>Paper size &amp; weight</b>	
<b>Staple capacity</b>	
<b>Staple position</b>	
<b>Saddle stitch</b>	
<b>Dimensions (W x D x H) &amp; weight</b>	538mm x 603mm x 1,011mm, approx. 38kg

## Hot Punch Unit MJ-5005 (for the MJ-1025 Finisher)

<b>Job Separator MJ-6004</b>	
<b>Capacity &amp; paper weight</b>	Upper tray: 25mm or 150 sheets (80g/m <sup>2</sup> ) Lower tray: 40mm or 250 sheets (80g/m <sup>2</sup> )
<b>Paper size &amp; weight</b>	Upper tray: A3-A5R, 64-105g/m <sup>2</sup> Lower tray: A3-A5R, 50-209g/m <sup>2</sup>
<b>Dimensions (W x D x H) &amp; weight</b>	498mm x 415mm x 153mm, 3.3kg

## Offset Tray MJ-5005

<b>Capacity &amp; paper weight</b>	39mm or 250 sheets (80g/m <sup>2</sup> )
<b>Paper size &amp; weight</b>	A3-A5, 50-209g/m <sup>2</sup>
<b>Dimensions (W x D x H) &amp; weight</b>	500mm x 415mm x 169mm, 3.5kg

## Bridge Kit KN-3520

<b>Platen Cover KA-3511PC</b>	Prerequisite for installation of Finisher
<b>Dimensions (W x D x H) &amp; weight</b>	546mm x 489mm x 44.4mm, 1.6kg

## Work Tray KK-3511

<b>Dimensions (W x D x H) &amp; weight</b>	282mm x 471mm x 108.2mm, 1.1kg
--	--------------------------------

## Fax 2nd Line Board GD-1160

<b>Wireless LAN Module GN-1041</b>	
<b>Antenna GN-3010</b>	Prerequisite for installation of Wireless LAN Module

## Data Overwrite Kit GP-1060

<b>Scrambler Board GP-1040</b>	
<b>PCI Slot GO-1060</b>	Prerequisite for installation of Scrambler Board

## Harness Kit for Coin Controller GQ-1020

--	--

## ISO 9001 and ISO 14001 Certifications

These highly acclaimed certifications are recognised worldwide as measures of top quality and environmental management excellence. They are awarded to manufacturers for facilities and practices meeting strict standards set by the Geneva based International Standardization Organization. To date, four copier sales affiliates and all Toshiba TEC manufacturing facilities where copiers, accessories, supplies and parts are produced have received ISO 9001 certification, while four copier sales affiliate and all Toshiba TEC manufacturing facilities have received ISO 14001 certification — even more reasons to count on Toshiba.

Microsoft, Windows®, and Windows® NT are registered trademarks of Microsoft Corporation in the United States and/or other countries.  
SAP® and R/3® are registered trademarks of SAP AG in Germany and several other countries.  
NetWare is a registered trademark of Novell, Inc.  
Adobe® PostScript® Level 2™ is a registered trademark of Adobe Systems, Inc.  
Macintosh® is a registered trademark of Apple Computer, Inc.  
All other brand and/or product names are trademarks of their respective owners.

Design and specifications subject to change without notice. The colour(s) of the actual product may vary from the colour(s) shown in this brochure. No part of this material may be used or reproduced in any manner whatsoever without permission. 1GB is equivalent to 1 billion bytes. Days for function availability may differ by region. "e-filing" is an abbreviation of "electronic filing". ©2005 TOSHIBA TEC CORPORATION All rights reserved.

As an ENERGY STAR Partner TOSHIBA TEC CORPORATION has determined that this multifunction device model meets the ENERGY STAR guidelines for energy efficiency.

These multifunction devices comply with the Wi-Fi standard.



# TOSHIBA



**TOSHIBA (AUSTRALIA) Pty, Ltd.**

A.C.N. 001 320 421: 84-92 Talavera Road, North Ryde, NSW 2113

Tel: (02) 9887-6000 Fax: (02) 9888-3037

New Zealand office: Lvl 1, Building 2, 666 Great South Road, Penrose, Auckland NZ

Tel: (9) 526-7700 Fax: (9) 526-7753

<http://www.eid.toshiba.com.au>

<http://www.eid.toshiba.co.nz>

R04051159601-TTEC  
TAP232BR00205CCDV1

DISTRIBUTED BY